

Like it was in the beginning
/ a rational approach
// een rationele benadering

Jaap van den Ende

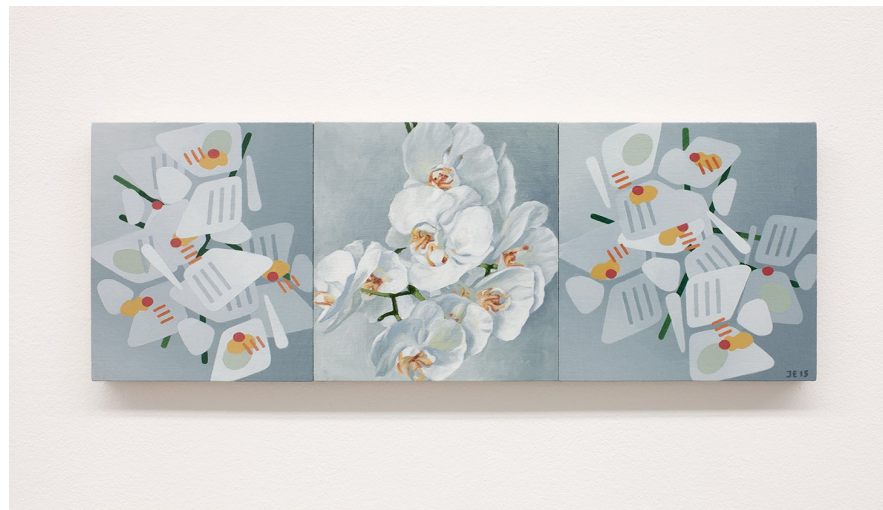
***Like it was in the beginning
/ a rational approach
// een rationale benadering***

Like it was in the beginning states the title of Jaap van den Ende's exhibition at AKINCI. A nod to the fact that Jaap van den Ende has been connected to AKINCI from the start of the gallery's existence, but most of all a reference to the collocation of his earliest and most recent work that is presented during this show. A diverse selection of paintings reveal the sweeping development of Jaap van den Ende's work over a period of half a century. At first sight, this development seems to reveal radical shifts in style and tenor. However, his rational approach is an apparent motif that sparkles through every painting – early and recent alike.

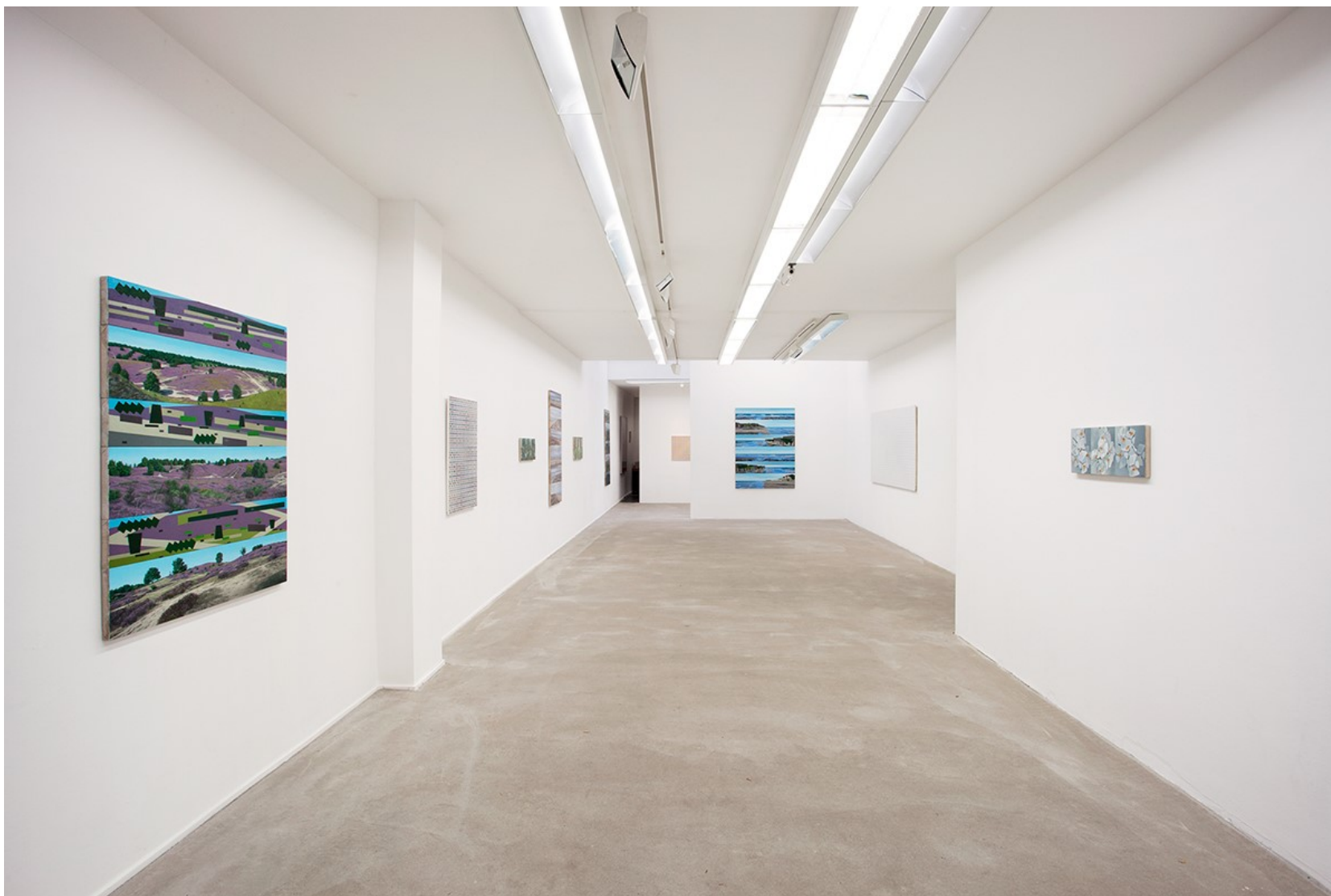
During the sixties and seventies, Jaap van den Ende's paintings were regarded and highly appreciated as exemplary for functionalist movements in that time. Standing out in their cool, geometric composition and conceptual colour investigations, his abstract paintings gained international esteem and were acquired by numerous private and museum collections. From the nineties onwards, Jaap van den Ende made a startling turn by introducing figurative elements into his work. His current practice is still strongly defined by figuration: close to photorealistic landscapes are submerged by abstractions in colour and form, offering oppositions in reason and emotion, system and intuition, formal and organic semblance all at once. By applying a deliberate ordering – a mechanism that accumulates a certain rhythm, a layered texture – Jaap van den Ende prompts a systematic painting process which, in a way, simulates systems and textures found in nature. The rational approach to landscapes and organic scenes in Jaap van den Ende's paintings today, and his treatment of these figurative elements on canvas, are in essence still very close to the methodical

approach he was famed for fifty years ago. Where at first his ordering originated from abstract geometry, it is now the texture of nature that determines the steps of his process.

Like it was in the beginning shows the extremes in Jaap van den Ende's rational approach, which has defined his oeuvre from the start. The assembly of his key works together reflect an ordering as well, similar to the ordering found in the paintings themselves, continuing his process of systematization to a sum of its parts. After all: in the end, the parts always prove themselves essential for the whole, every end-result a manifestation of measured beginnings.



Orchidee (informele systemen), 2015
Private collection (photo: Wytske van Keulen)



Overview *Like it was in the beginning*
Jaap van den Ende at AKINCI, Amsterdam, 2016
(photo: Wytske van Keulen)

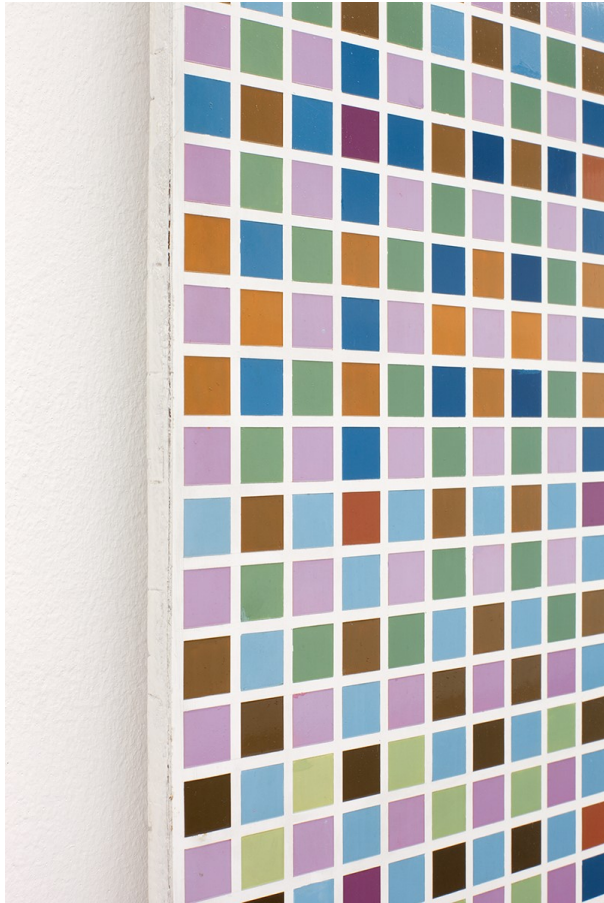


Overview *Like it was in the beginning*
Jaap van den Ende at AKINCI, Amsterdam, 2016
(photo: Wytske van Keulen)

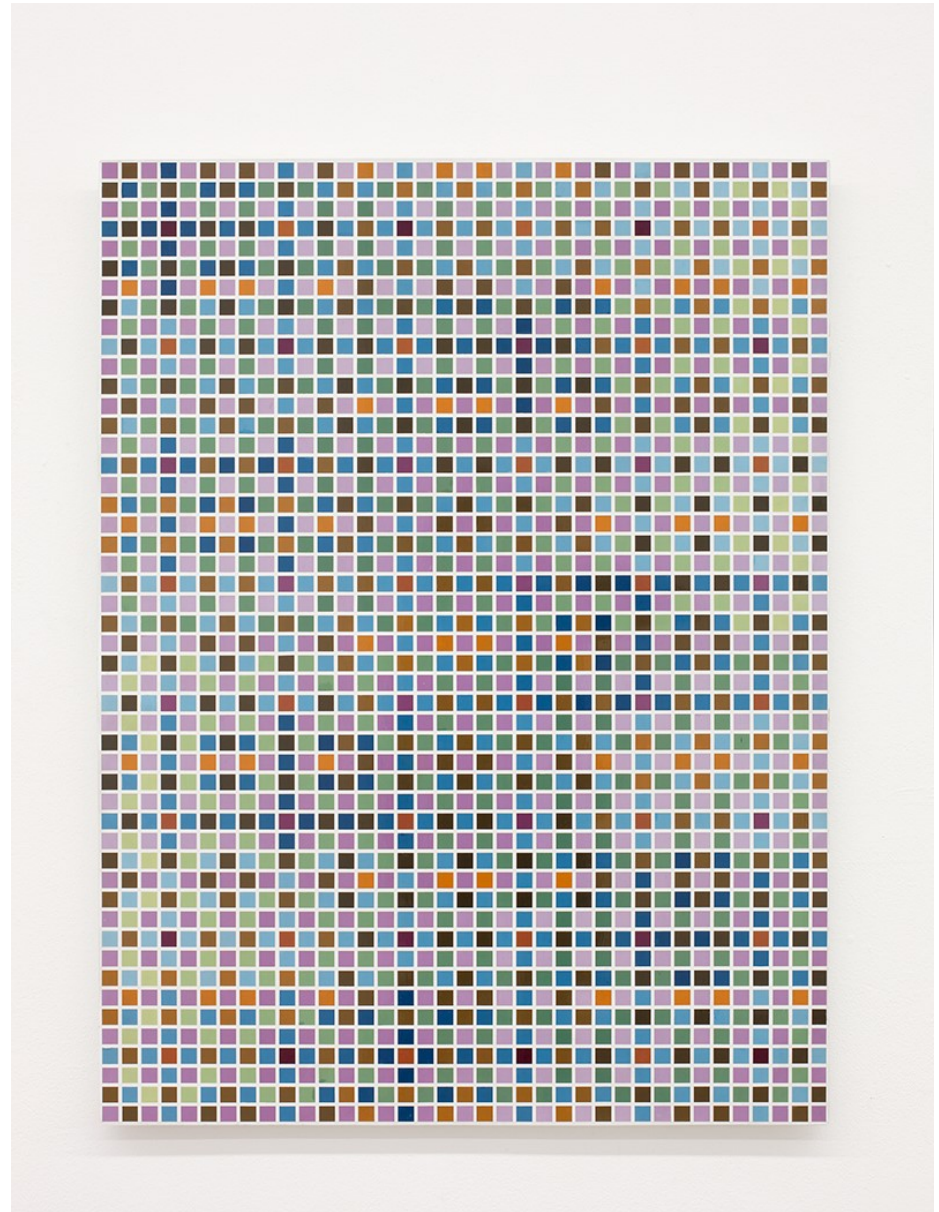


Heidevelden, zandverstuivingen (informele systemen), 2016
 oil on linnen, wood, 120 x 96 cm
Like it was in the beginning, Jaap van den Ende at AKINCI, Amsterdam, 2016
 (photo: Wytske van Keulen)



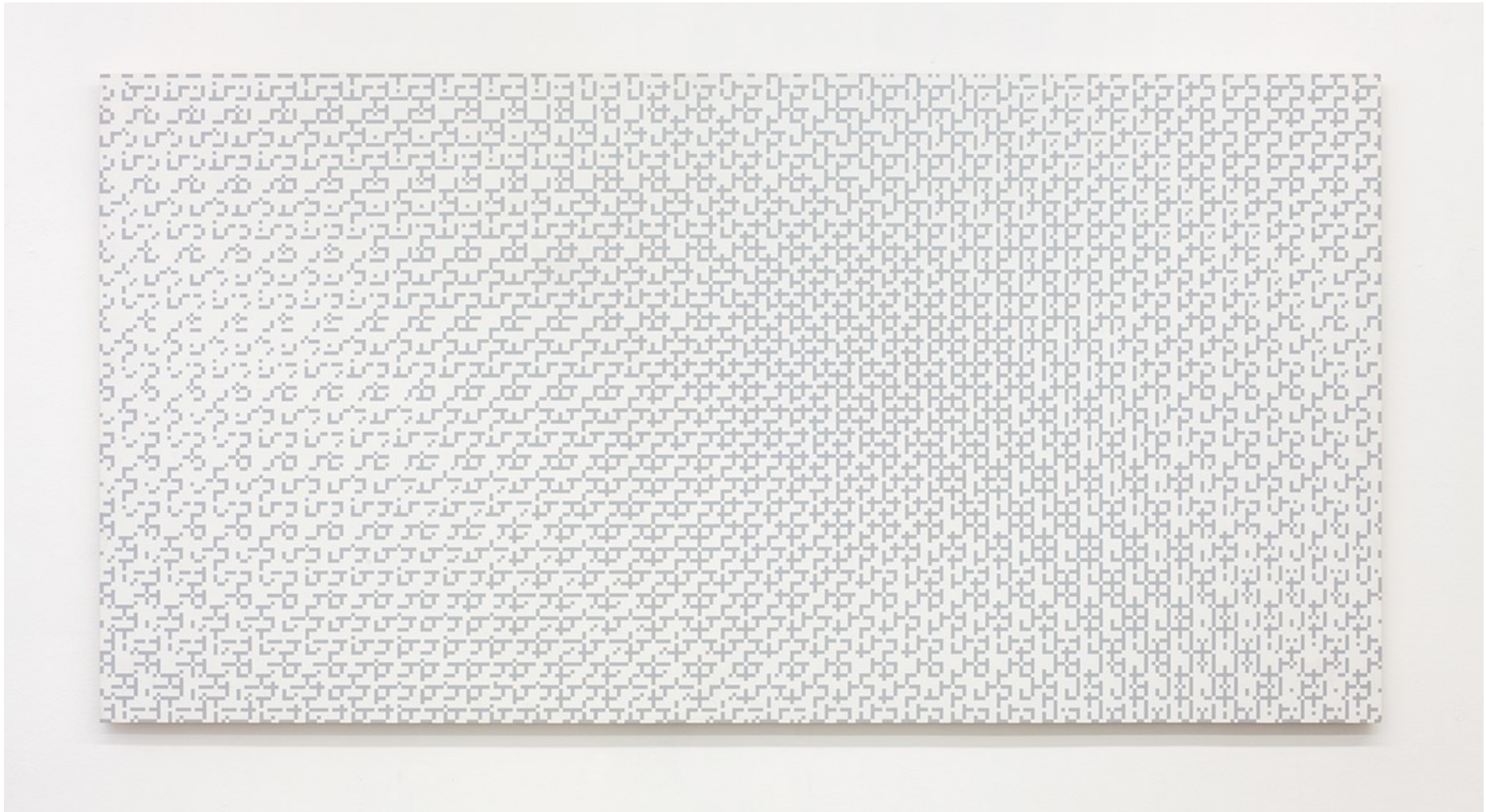


Structure 35, 1972
 varnish, formica, wood, 94 x 70 cm
Like it was in the beginning, Jaap van den Ende at AKINCI, Amsterdam, 2016
 (photo: Wytske van Keulen)





Overview *Like it was in the beginning*
Jaap van den Ende at AKINCI, Amsterdam, 2016
(photo: Wytske van Keulen)



Structure grey 30, 1973

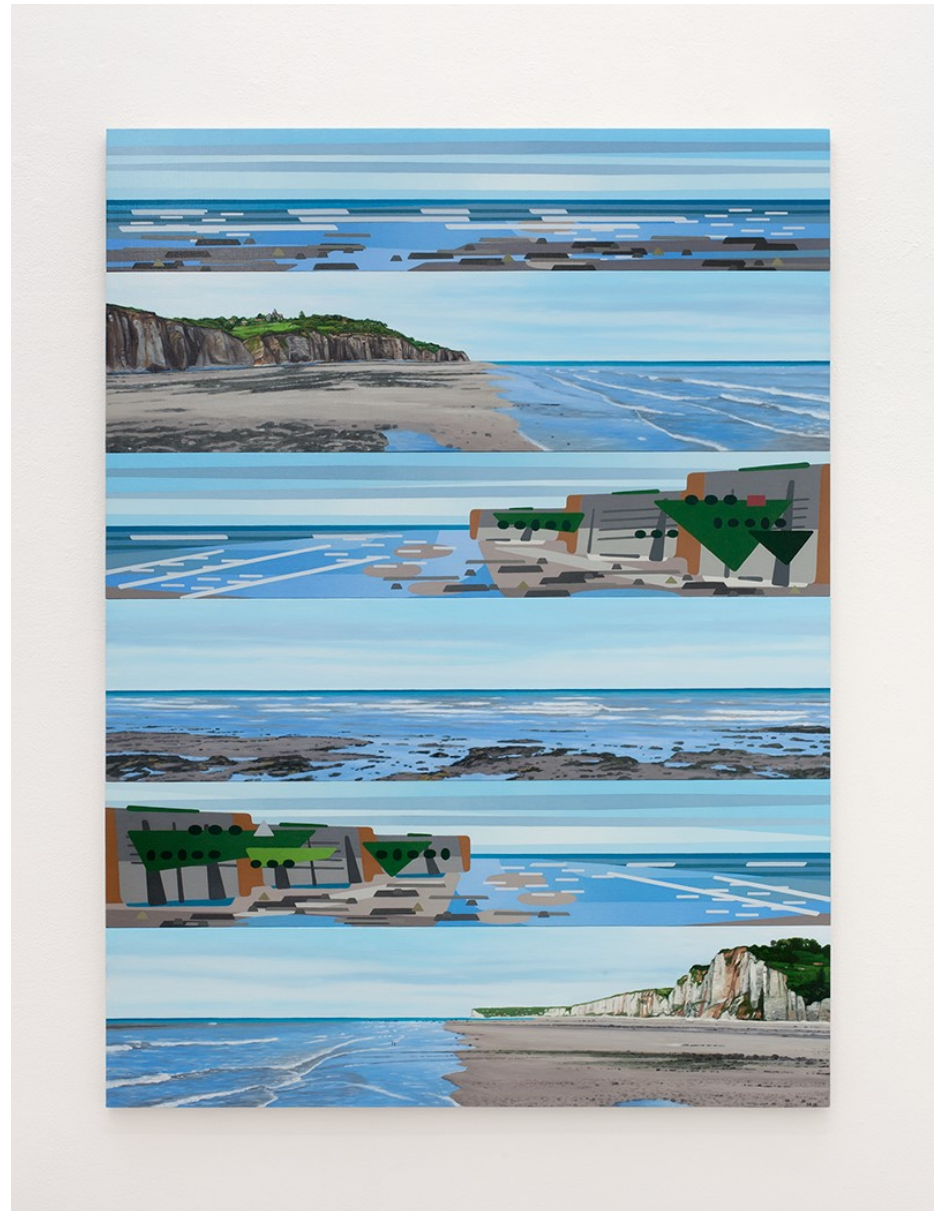
varnish, formica, wood, 118 x 230 cm

Like it was in the beginning, Jaap van den Ende at AKINCI, Amsterdam, 2016

(photo: Wytske van Keulen)



Overview *Like it was in the beginning*
Jaap van den Ende at AKINCI, Amsterdam, 2016
(photo: Wytske van Keulen)



Rotskust, horizonlijn (informele systemen), 2016
oil on linnen, wood, 6 partitions, 162.5 x 120 cm
Like it was in the beginning, Jaap van den Ende at AKINCI, Amsterdam, 2016
(photo: Wytske van Keulen)



Overview *Like it was in the beginning*
Jaap van den Ende at AKINCI, Amsterdam, 2016
(photo: Wytske van Keulen)

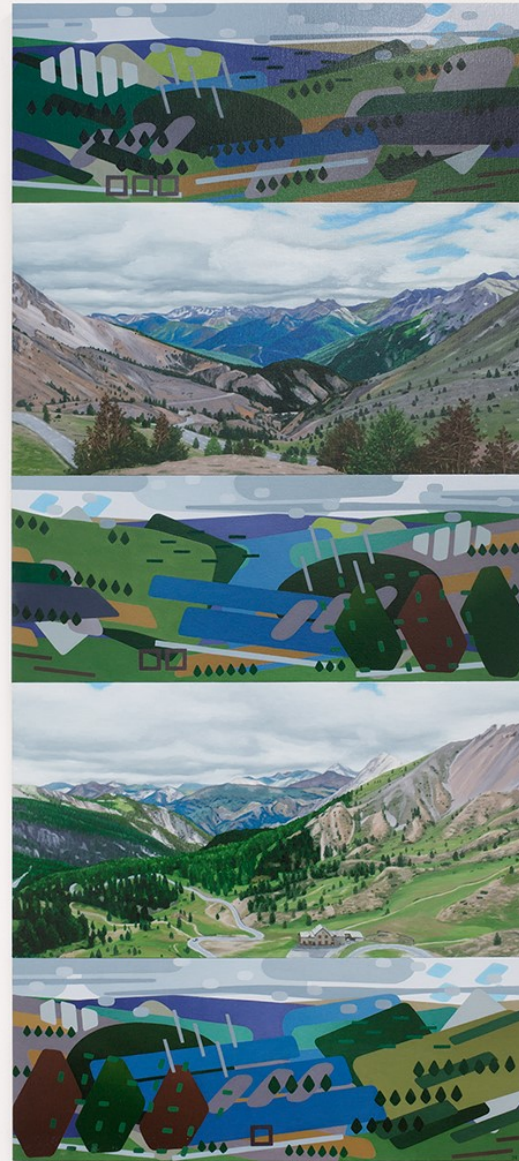


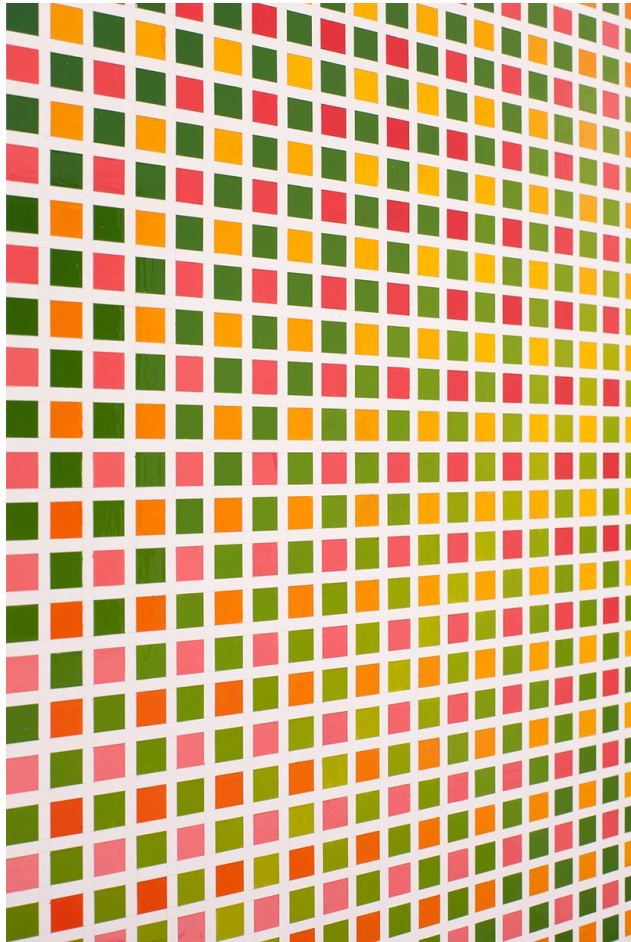
Tuinen (informele systemen), 2016
varnish, formica, wood, 135 x 90 cm
Jaap van den Ende at AKINCI, Amsterdam, 2016
(photo: Wytske van Keulen)



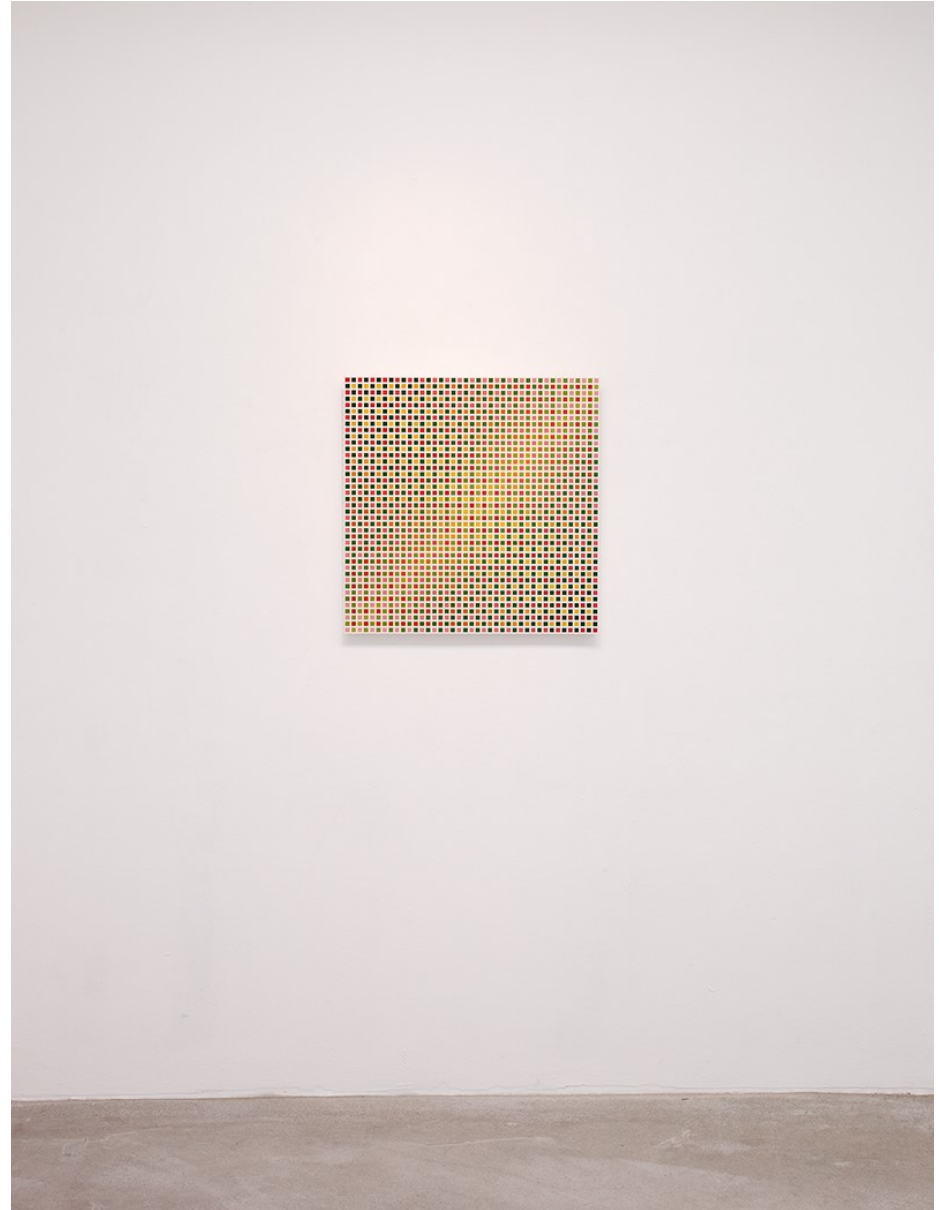
Overview *Like it was in the beginning*
Jaap van den Ende at AKINCI, Amsterdam, 2016
(photo: Wytske van Keulen)

Dal, boomtoppen (informele systemen), 2016
oil on linnen, wood, 5 partitions, 170 x 75 cm
Jaap van den Ende at AKINCI, Amsterdam, 2016
(photo: Wytske van Keulen)





Systematische systemen 16, 1969
 varnish, formica, wood, 61.5 x 61.5 cm
Like it was in the beginning, Jaap van den Ende at AKINCI, Amsterdam, 2016
 (photo: Wytske van Keulen)





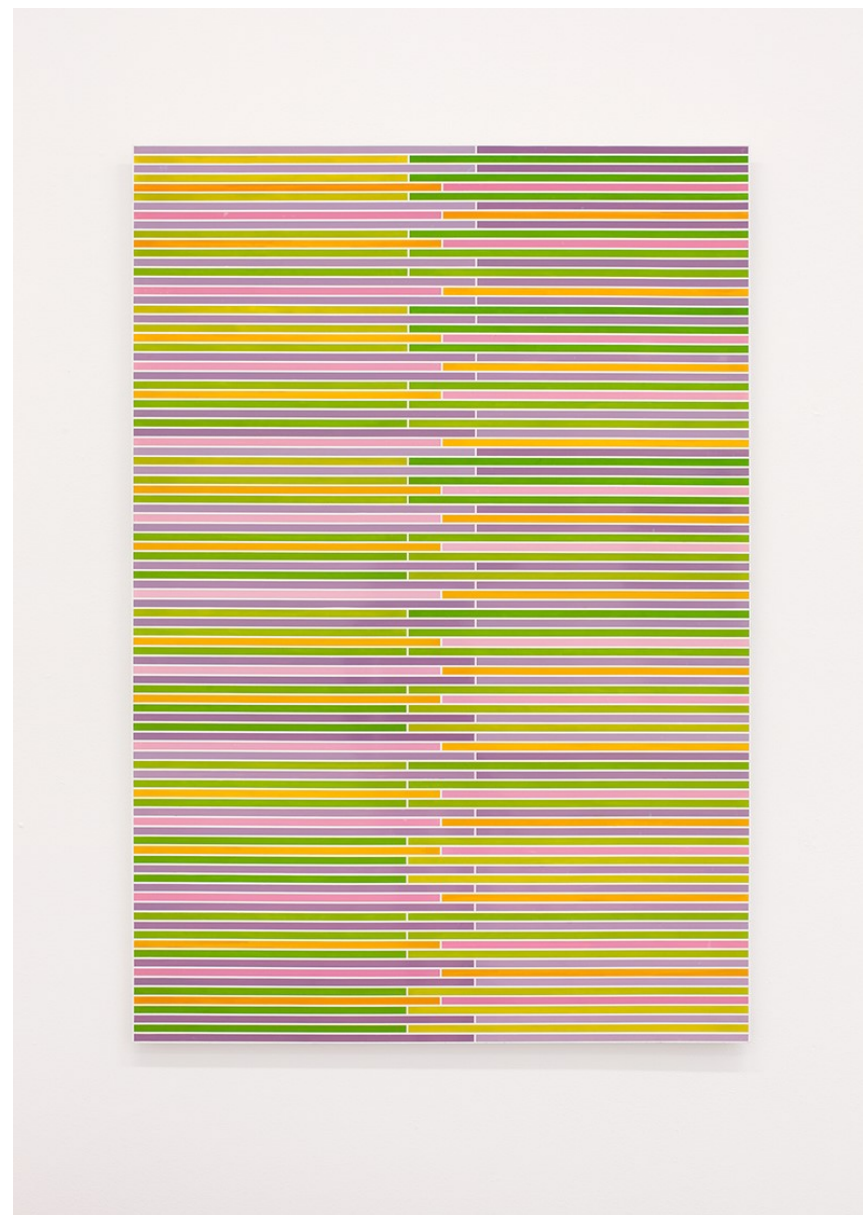
Overview *Like it was in the beginning*
Jaap van den Ende at AKINCI, Amsterdam, 2016
(photo: Wytske van Keulen)

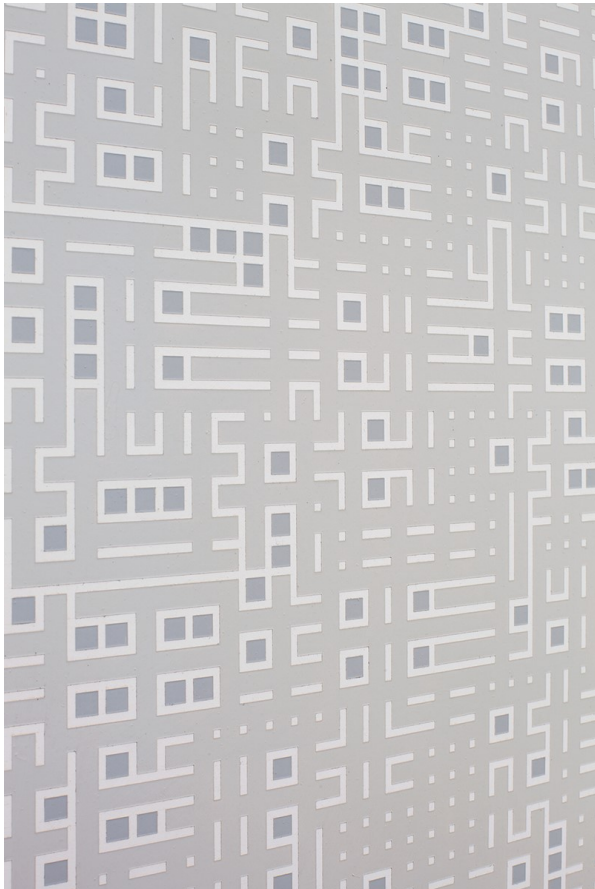


Gemengd boeket (informele systemen), 2016
oil on linnen, wood, 3 partitions, 32 x 108 cm
Jaap van den Ende at AKINCI, Amsterdam, 2016
(photo: Wytske van Keulen)

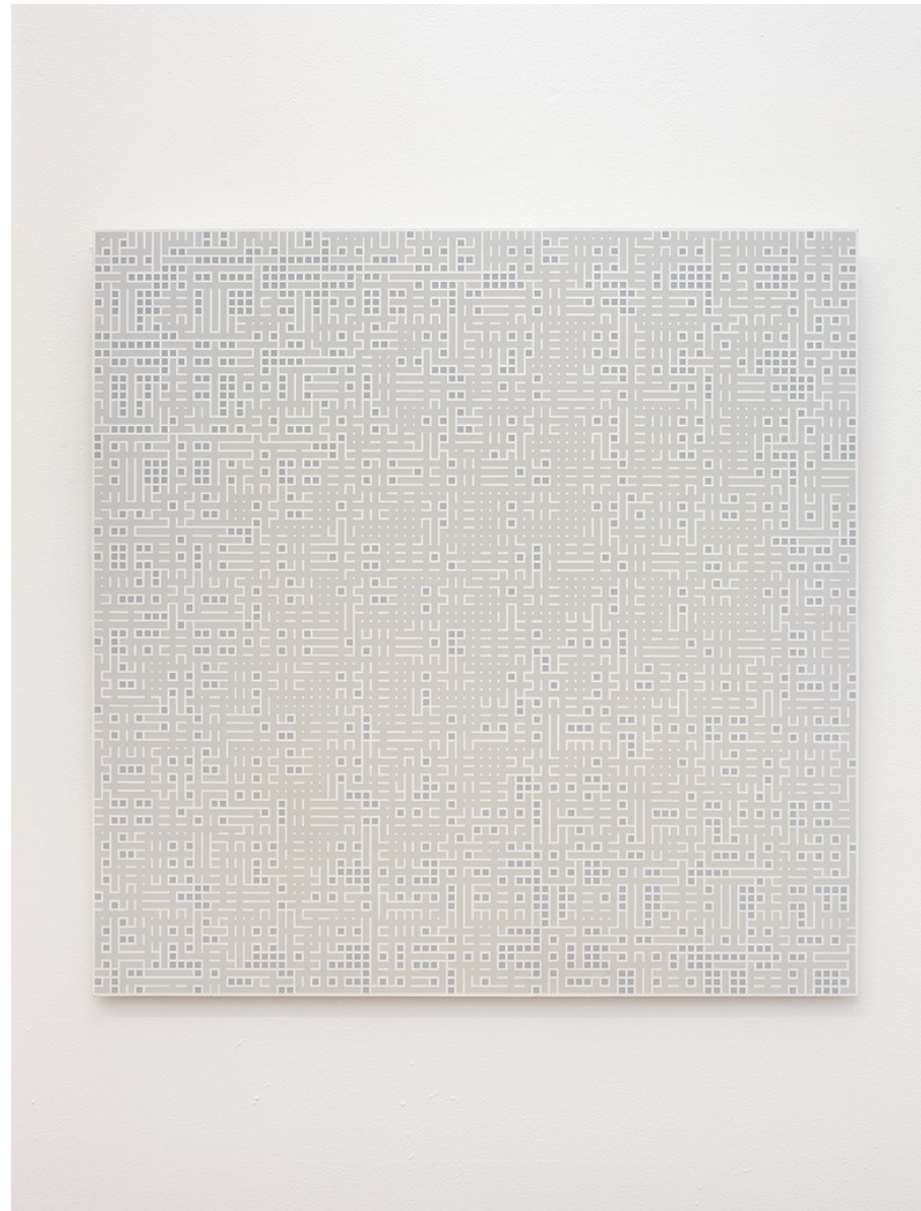


Linear structure 3, 1971
 varnish, formica, wood, 142 x 98 cm
Like it was in the beginning, Jaap van den Ende at AKINCI, Amsterdam, 2016
 (photo: Wytske van Keulen)





Structure grey 19, 1973
varnish, formica, wood, 100 x 100 cm
Like it was in the beginning, Jaap van den Ende at AKINCI, Amsterdam, 2016
(photo: Wytske van Keulen)





Overview *Like it was in the beginning*
Jaap van den Ende at AKINCI, Amsterdam, 2016
(photo: Wytske van Keulen)



Structure grey 1, 1972
 varnish, formica, wood, 150 x 108 cm
Like it was in the beginning, Jaap van den Ende at AKINCI, Amsterdam, 2016
 (photo: Wytske van Keulen)



Bergen, stuwmeer (informele systemen), 2016
Like it was in the beginning, Jaap van den Ende at AKINCI, Amsterdam, 2016
Private collection (photo: Wytske van Keulen)

