

Gluklya

(Natalia Pershina–Yakimanskaya)

BEHIND THE CARNIVAL

Tour through the exhibition at AKINCI, 2018



Behind the Carnival, overview at AKINCI, 2018, photo Wytse van Keulen



Shahmaran, 2017, Pvc, wire, 340 x 120 x 120 cm, photo Wytske van Keulen

Shahmaran is a mythological creature with origins in Turkey, Iran and Iraq. This creature has two faces: a beautiful woman and a snake. Introduced by Tuncay Korkmaz (Murad), a Kurdish writer and activist.



Shahmaran, 2017, Pvc, wire, 340 x 120 x 120 cm (detail), photo Wytse van Keulen



Shahmaran, 2017, Pvc, wire, 340 x 120 x 120 cm, detail, photo Wytse van Keulen



Shahmaran, 2017, Pvc, wire, 340 x 120 x 120 cm/drawings Language of Fragility with Marwa Aboud, photo Wytske van Keulen



Embracing All the Strange (Installation), 2017, mixed techniques and materials, measurements variable, overview AKINCI, photo Wytske van Keulen
An installation in which objects from the *Carnival of the Oppressed Feelings*, as well as the video *Embracing All the Strange*, is brought together in a confined space.



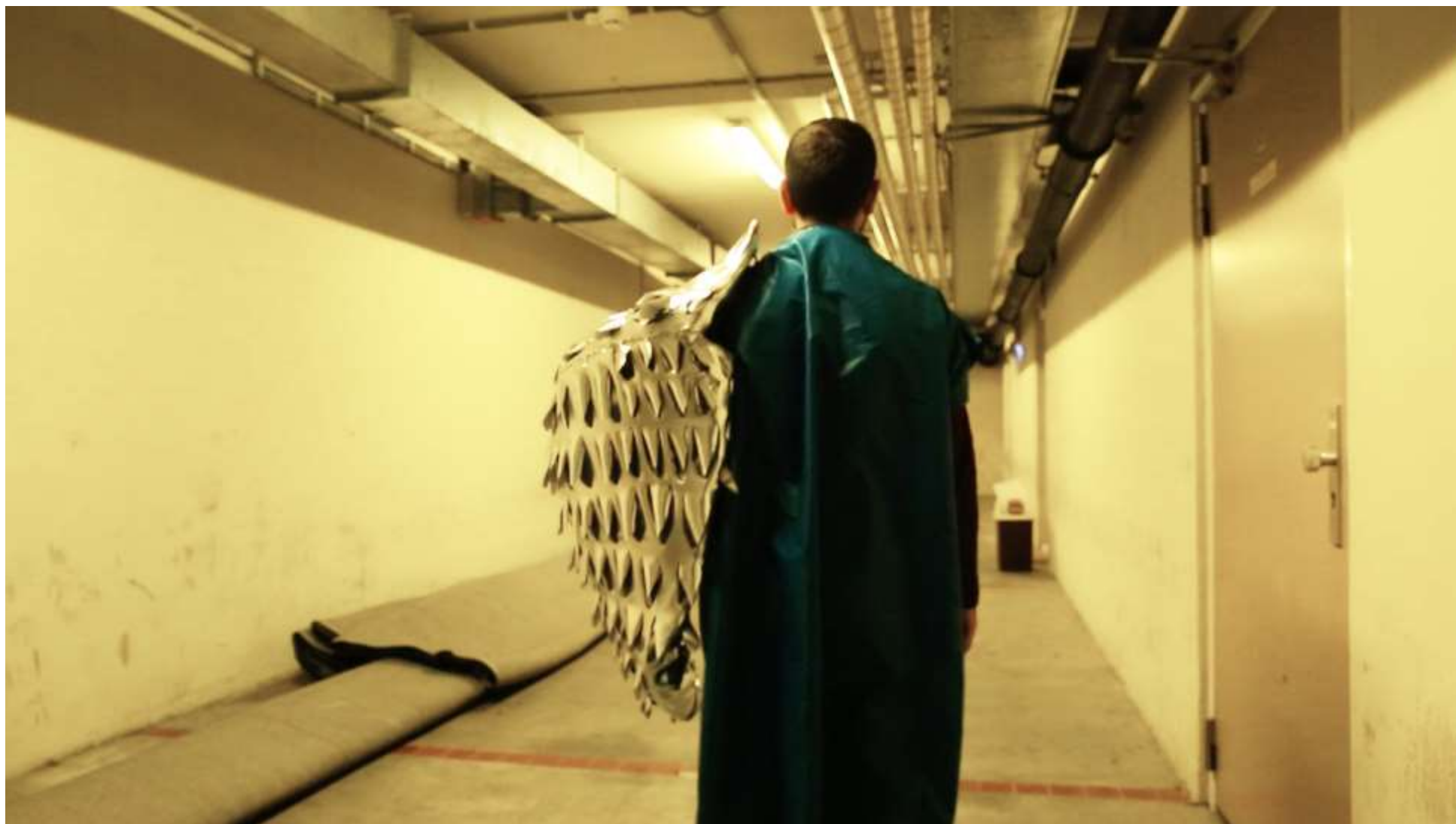
Prostitute Chair, t2017, extile, iron and plastic, 76x48x94 cm
And
The Wing, 2017, textile, iron, 2017, 90x30 cm
Photo Wytse van Keulen



Christian Chair, 2017, textile, iron, plastic, steel, 76x48x94 cm, photo Wytse van Keulen



Embracing All the Strange (Installation), 2017, mixed techniques and materials, measurements variable, overview AKINCI, photo Wytske van Keulen



Embracing All the Strange, 2017, HD video 14 min

a visualization of the sensitive texture of human interaction that occurred during Gluklya's workshops. Moving away from the linear thinking towards a more oneiric (dreamy) chronotope.. Main protagonist is Tuncay Korkmaz (Murad), Kurdish writer and activist.



Embracing All the Strange, 2017, HD video 14 min



Embracing All the Strange, 2017, HD video 14 min



'Drawings for research 'Carnival of the Oppressed Feelings', 2017, overview at AKINCI, photo Wytke van Keulen
A wall with drawings, memo's and invitations, all connected to the workshops Gluklya did with the refugees in the Bijlmerbajes.



Drawings for research 'Carnival of the Oppressed Feelings', 2017, installation view AKINCI, photo Wytske van Keulen



Prison Cell, 2017 PVC, wood and textile, 270 x 170 x 238 cm, photo Wytske van Keulen.
A representation of a prison cell in the Bijlmerbajes. The red clove (inside the cell) is a symbol of the Russian Great October Social Revolution 1917.



Prison Cell, 2017 , PVC, wood and textile, 270 x 170 x 238 cm, detail, photo Wytske van Keulen



Prison Cell, 2017 , PVC, wood and textile, 270 x 170 x 238 cm, detail, photo Wytse van Keulen