

Art Brussels 2024

Molly Palmer

DISCOVERY section / booth 6C-17



Installation view PASSWORD at AKINCI, 2022, photo by Peter Tijhuis

About

Molly Palmer works within and between the media of filmmaking, installation, sculpture and choreography. Using hand made props, sets and costumes, she greenscreens protagonists into layered video worlds where music, gesture and dialogue form cyclical narratives exploring the strangeness concealed within ordinary things. Her practice is episodic and accumulative, encouraging porous membranes between past, present and future. By generating spaces that are visibly handmade, she builds a hybrid culture dislocated from the slick virtual worlds we are immersed in daily; a timeless no-place with its own rhythm and logic, where reality and fiction become destabilised and intertwined. Palmer's installations explore the potential of sculptural sets and surround sound to produce a heightened physical encounter with the work. The fractured narratives that unfold within these environments explore the transformative potential of intention and belief, often seeking resolution for difficult experiences and shifts of perception. The art historical and theoretical is filtered through personal experience and diverse visual cultures from design, architecture, theatre, films and TV. Consequently, her time-based assemblages create spaces that are strange yet familiar; narratives that are sometimes funny, bewildering and beautiful but can also be disorienting, emotionally enigmatic, sad or frightening. Although visually dream-like, this work is not intended as fantasy. Instead it offers a step sideways into parallel worlds that allow us to examine and enjoy the complexity and absurdity of being human.

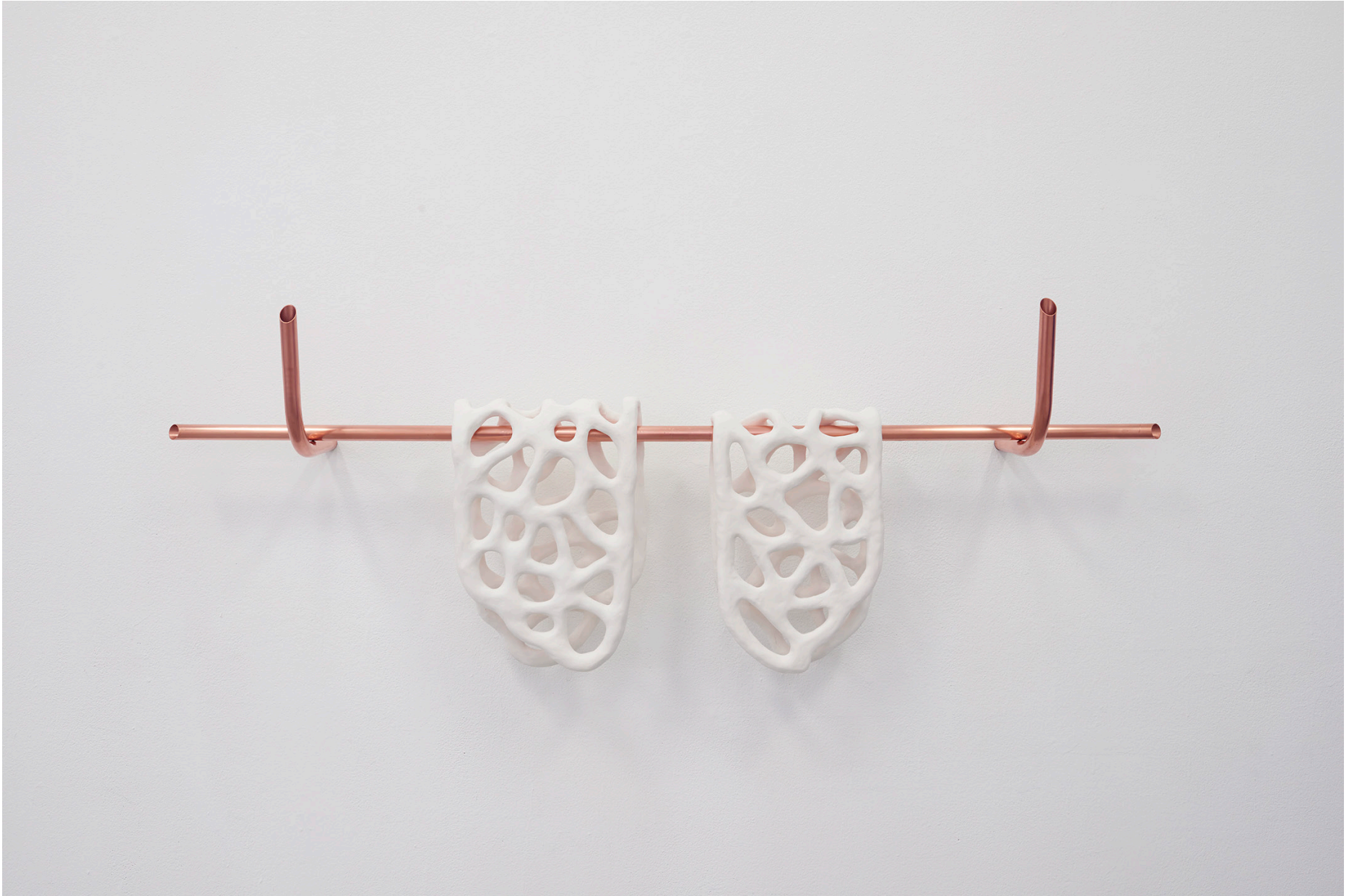
Molly Palmer was Artist in Residence at the Rijksakademie van Beeldende Kunsten in Amsterdam, where she has exhibited at the Open Studio Exhibition in 2021 and prepared solo shows for 1646 in the Hague and Ty Pawb in Wales. She graduated from Royal Academy Schools in 2016, where she was awarded the Gold Medal. She received Arts Council England's Creative Practice Development Fund and has exhibited widely at institutions and museums, a.o. Buitenplaats Doornburgh, Maarssen (2023); NEST, The Hague (2023); solo show at AKINCI, Amsterdam (2022); Dastan Basement, Tehran (2021); 1946, The Hague (2019); TENT, Rotterdam (2019); Somerset House, London (2018); House of Egorn, Berlin (2018); Art Basel Miami Beach (2016); Bikini Wax & MUPO, Mexico (2016); Galeria Vermelho, São Paulo (2016) and Glasgow Project Room (2018).

Emblem, 2022, 3D printed sculpture with gilded handmade ceramic coin, 24,2 x 16,5 x 3,6 cm (AP)





Emblem, 2022, 3D printed sculpture with gilded handmade ceramic coin, 24,2 x 16,5 x 3,6 cm (AP)



Molly Palmer, Mechanism of a lock (lungs), 2019, white stoneware and copper pipe, 53 x 139 cm



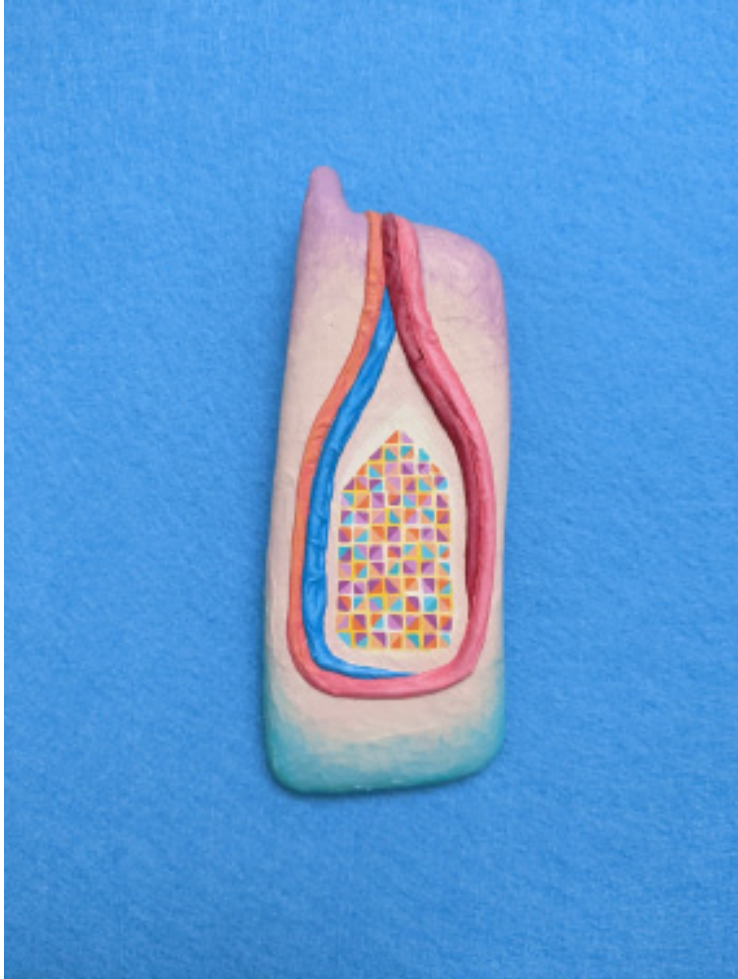
The Object, 2021, wood, hand painted, gilded, 126 x 100 x 28 cm



*Nine Nectarines and Other Porcelain (Lattice), 2019, glazed white stoneware with gold chain,
47 x 40 x 2,5 cm*



Nine Nectarines and Other Porcelain (Organs), 2019, plaster sculptures mounted on painted wood, felt covered, 40 x 50 x 8 cm / 51 x 68 x 3,6 cm



Opting Out, 2010, acrylic on paper mache and carved wood, 17 x 6 x 1,5 cm



Shibboleth, 2024, acrylic on board, 80 x 117,5 x 1,8 cm



Molly Palmer, Password, 2022, 4K video with stereo sound, 11.20 min (still)



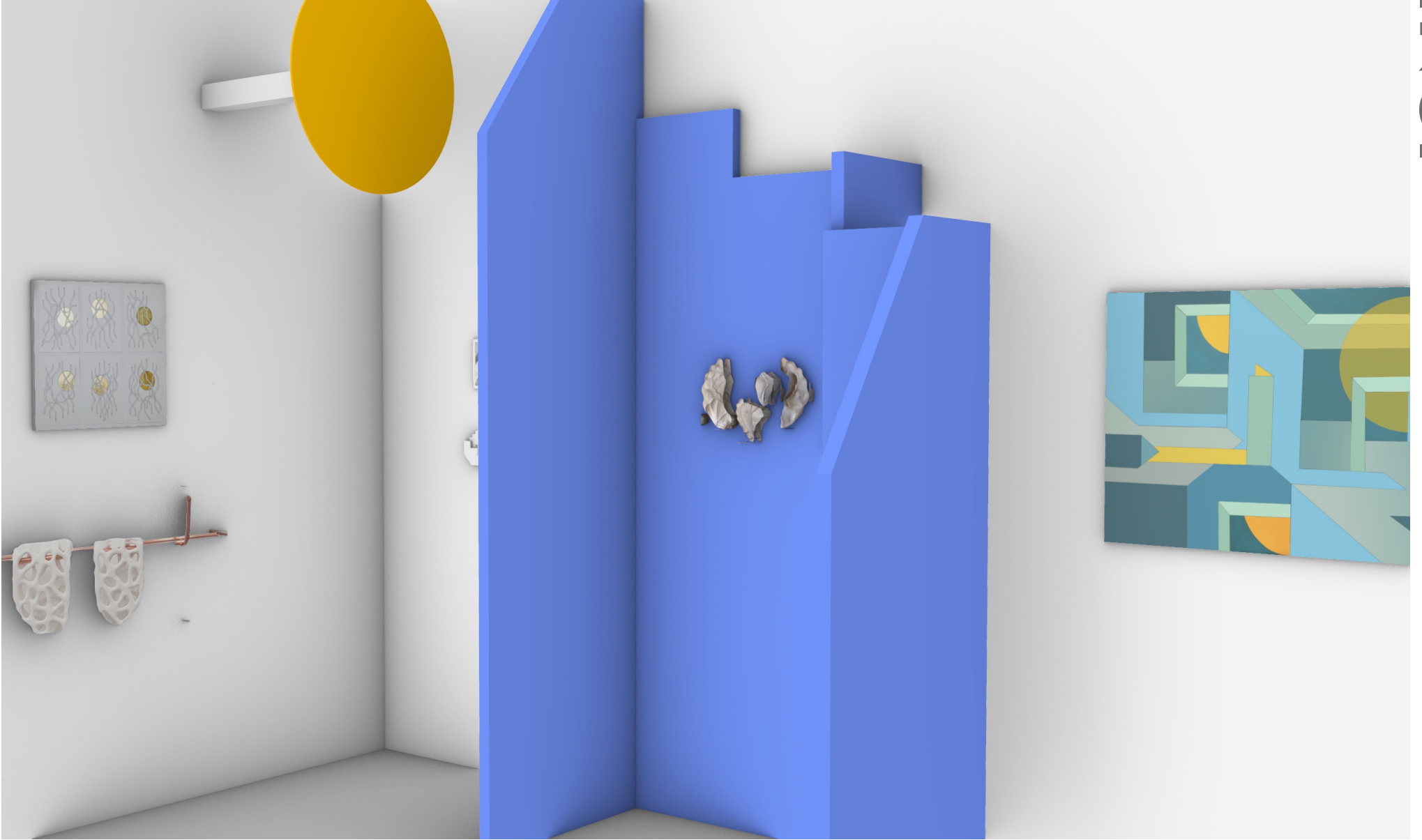
Muscle Beach, Miami Condo, 2010, acrylic on board, 60 x 60 x 1,5 cm



Dream Safari, Soft Systems series, 2009, etching, aquatint and chiné collé, framed, museum glass, 21 x 15,5 cm



Installation dividers and Sun, 2022, wood, textile, dimensions variable



Installation dividers and Sun, 2022, wood, textile, dimensions variable, rendering booth Molly Palmer at Art Brussels, 2024 by Ali Eslami